

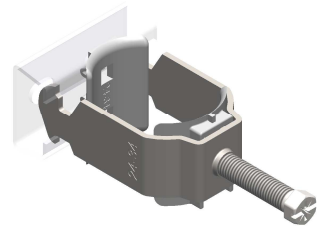


Technical Data Sheet

Date: 2015-04

Page: 1 of 1

Clamp Clip



Application	Fastening of cable, wires, and installation piping
Standards	VDE 0100-100 / 06-2009 / IEC 60364 – 1:2008: Low Voltage Electrical Installations – Part 1 – Fundamental Principles ...
Clamping Range (diameter)	BS 12 8 - 12 mm BS 16 10 - 16 mm BS 22 14 - 22 mm BS 28 18 - 28 mm BS 34 24 - 34 mm BS 40 30 - 40 mm BS 46 36 - 46 mm BS 52 42 - 52 mm BS 58 48 - 58 mm BS 64 54 - 64 mm
Fastening / Mounting	Onto DIN rail TS 35/... acc. to EN 60715 Double-thread hexagonal screws (10 mm) with slotted cross-recess Z2/Z3
Materials	Steel, zinc plated, and thick-film passivated Pressure trough of high impact Polypropylene
Safety	Edges rounded
Environment Protection	All material and applied procedures are RoHS compliant
Accessories	Counter-trough for snap-on assembly, GW 12 ... GW 64